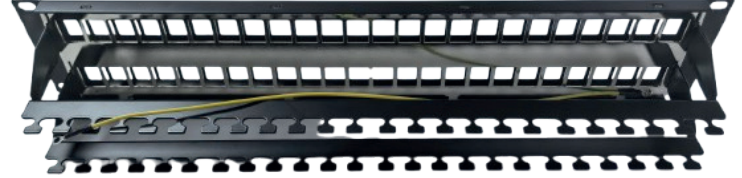


KJPP2UBMCTEF

19-inch 2U patch panel full metal with 48 RJ45 Keystone Ports
Automatic grounding and pre-cut mounting slots



- ✓ Elegant and minimalist design.
- ✓ Automatic grounding at the front and grounding connection for shielded connectors.
- ✓ Quick identification with silk screen.
- ✓ Rear support bar with secure attachment in T shape.
- ✓ Pre-cut 19-inch mounting slots for quick one-hand installation.

THE PURPOSE

19-inch patch panel with rear support bar. Designed to accommodate 48 shielded or unshielded Keystone jacks in 2U.

The galvanized front plate ensures automatic grounding through its contact with the rack upon installation.

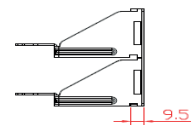
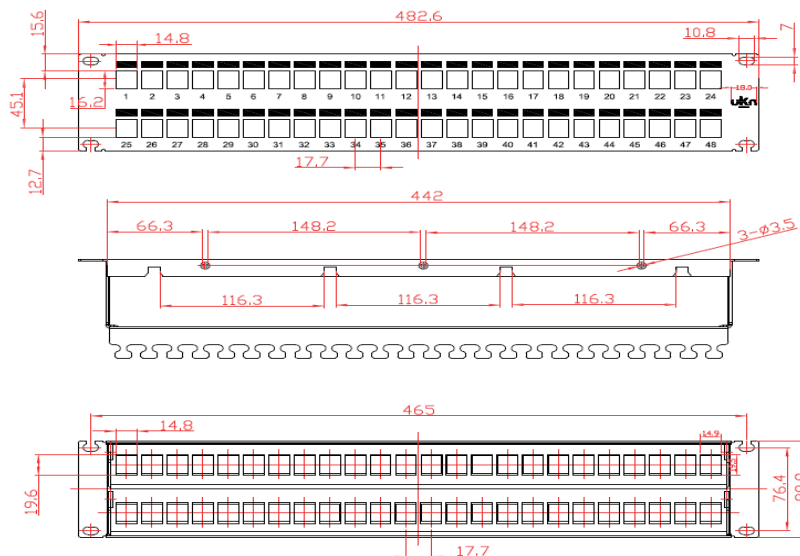
Made with high-quality materials to ensure reliability over years of use.

Identification is facilitated by silk-screened numbers from 1 to 48.

THE STRUCTURE

Dimensions : (L)482.6mm x (l)43.8mm x (P)91.5mm

Material : Steel and galvanized steel



KJPP2UBMCTEF

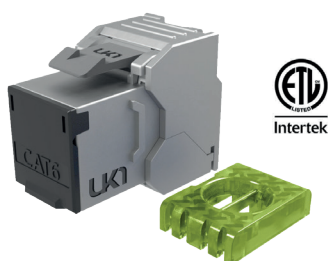
19-inch 2U patch panel full metal with 48 RJ45 Keystone Ports
Automatic grounding and pre-cut mounting slots



PURCHASE INFO

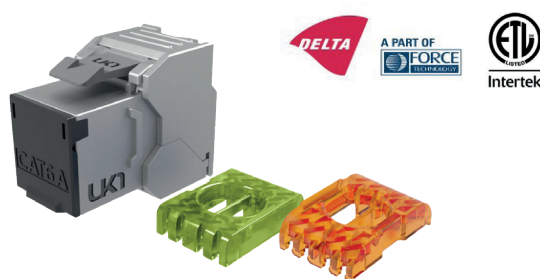
References	Designation	Packaging
KJPP2UBMCTEF	19-inch 2U 48-port Keystone panel full metal	Eco-box de 1p

EXTRAS



KJ6FSHQEF

Shielded Cat6 RJ45 Keystone jack, tool-free certified



KJ6AFSHQEF

Shielded Cat6a RJ45 Keystone jack, tool-free certified



KSBRUSHCEF

19-inch 1U cable management panel with brush



KSPFK1U4RCFEF

19-inch 1U cable management panel with 4 rings

